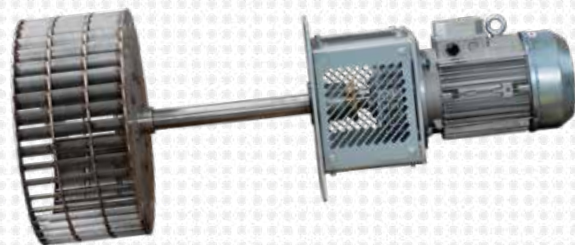


HIGH TEMPERATURE RE-CIRCULATION FANS FOR FURNACES

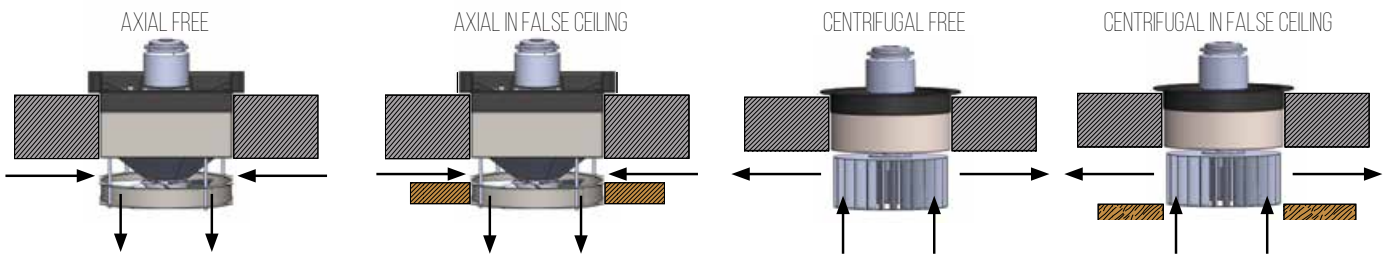
FUME EXTRACTION WITH ADJUSTABLE EJECTOR



WE CREATE AIR, PERFORMANCE, SILENCE

AGITATOR TYPE AND POSITIONING

Re-circulation fans can be axial/helicoidal or centrifugal.
Both types can be placed free in the vault, or inserted in the furnace vault's false ceiling



The axial ones better fit furnaces without upper and lateral inner chambers. Instead, the centrifugal ones are normally preferred where it's necessary to reach the elements sideways, also through inner walls, or where high-speed is required.

IMPELLER TYPES

Upon request, Rimor provides impellers with the most suitable shape and dimension. Besides, our Company offers advanced computational fluid dynamic simulations for agitators, testing any kind of operating condition.



ELISALD
Welded elicoidal with reduced hub



SQUIRREL CAGE
Centrifugal squirrel cage impeller



REVERSE CENTRISALD
Welded centrifugal backward curved fan

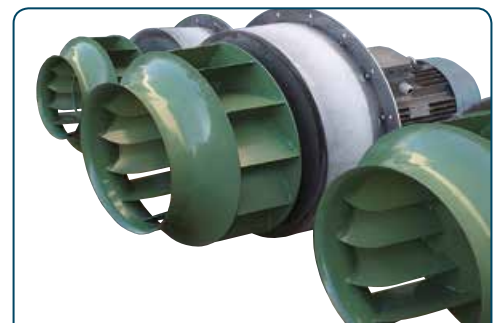


PLUS RIMOR IMPELLER

ELIFUSION
Casting elicoidal

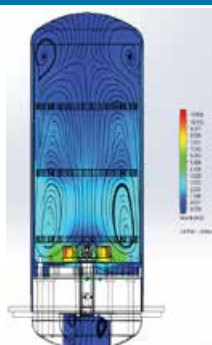


CENTRIOPEN
Centrifugal open fan

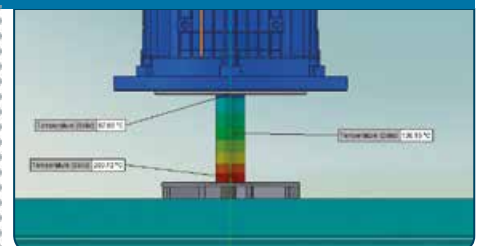


RIMOR COMPUTATIONAL FLUID DYNAMICS SIMULATION

Rimor offers a wide range of computational fluid dynamic simulations for design, verification and optimization, such as cooling and heating transitory analysis, steady state studies for convection and conduction inside furnaces, re-circulation fans and shafts.



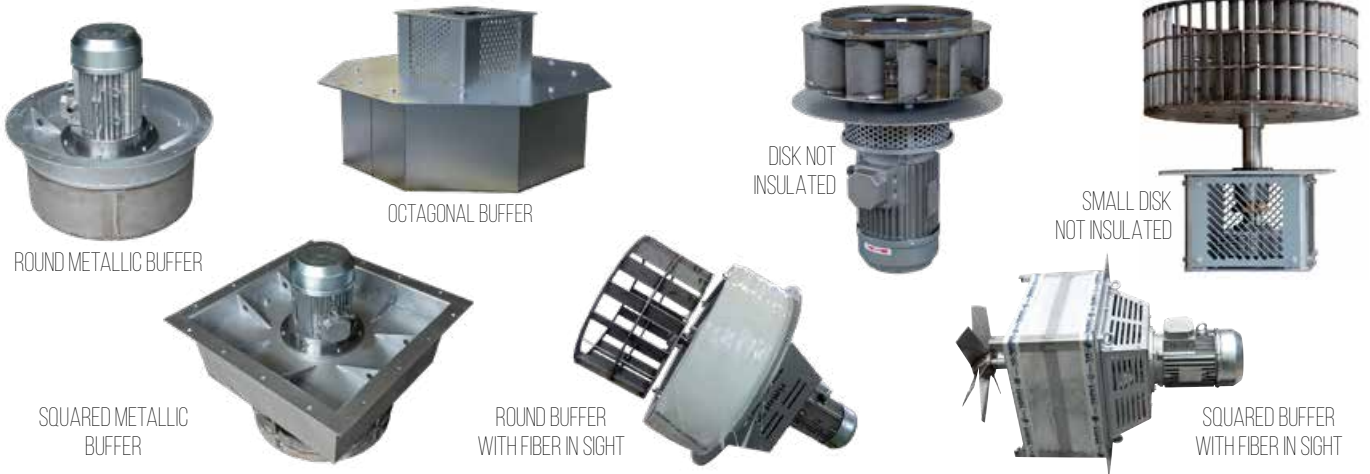
CFD ANALYSIS OF FLOWS IN FURNACES WITH RE-CIRCULATION FANS



HEAT CONDUCTION: EXAMPLE OF HEAT TRANSMISSION THROUGH SHAFT

BUFFERS

Our design and carpentry skills allow us to provide buffers of any kind of shape and dimension, meeting the client's needs.



SEALING SYSTEMS

Customers can choose between N₂ fluxed sealing system, suited to furnaces in controlled atmosphere with nitrogen and simple sealing for inner atmosphere using oxygen.



N₂ FLUXED
Nitrogen
sealing



BADERNA
A MOLLA
Simple sealing

SHAFT COOLING SYSTEMS

Shaft cooling systems can be :

1. Air cooling suitable for temperatures up to 600 °C
2. Water cooling suitable for temperatures up to 900° C



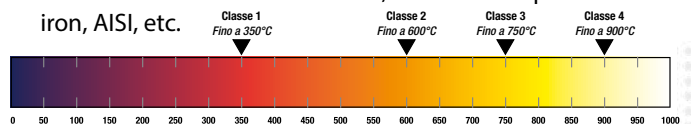
AIR SYSTEM



WATER SYSTEM

TEMPERATURE CLASSES

- The following features may change based on temperature conditions:
- •
- Constructive materials of buffers, shafts and impeller as iron, AISI, etc.



MOTOR COOLING SYSTEMS

Aside from standard air-cooled system, Rimor offers the option of a water-cooled engine



AIR SYSTEM



WATER SYSTEM

WATER CHAMBER COOLING SYSTEMS



WATER-WATER SYSTEM



WATER-AIR SYSTEM

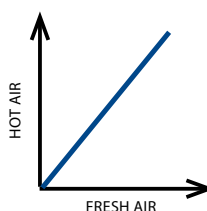
- These systems use water as well as air, and furthermore they are equipped with:
- Mass flow, temperature and pressure control system
- Easy components maintenance
- In water-water cooling system the operation is guaranteed even after the breakage of one of the pumps.

FUME EXTRACTION



1. Direct extraction through fans with particular features as insulation and soundproofing. Temperature range: 100-1000° C

REGULATION WITHOUT VALVE



2. Indirect extraction through Venturi system. Temperature range: up to 1200° C

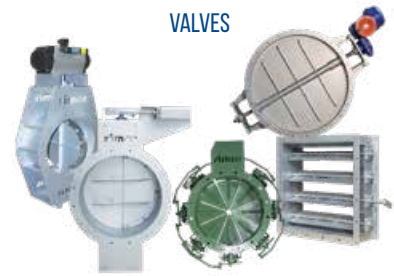
INDUSTRIAL FAN AND FURNACE AGITATORS



SOUNDPROOF FANS ROTOCABE®



VALVES



AIR FILTRATION



SOUNDPROOF CABINE



SANDBLASTING, METALIZATION AND PAINTING PLANTS



RECUBE SYSTEM®, ENERGY RECOVERY UNIT FOR VENTILATION AND HEATING



UNCONVENTIONAL AIR DESIGN

- SECTOR: AUTOMOTIVE TESTING; CLIMATIC CHAMBERS, TESTING SOLUTIONS
- SECTOR: CEMENTO LATERIZI
- SECTOR: MINING AND TUNNEL VENTILATION
- SECTOR: PRINTING & CONVERTING
- SECTOR: HIGH TEMPERATURE AND FURNACE FANS
- SECTOR: TRIM SUCTION AND SHREDDING OF IN-LINE PLASTIC FILMS
- SECTOR: GLASS MANUFACTURING
- SECTOR: WASTE / ENERGY / EMISSION
- SECTOR: BIOMASS

TRANSPORT AND TRIM SHREDDING



CONDITIONING AND UMIDITY REMOVAL UNIT



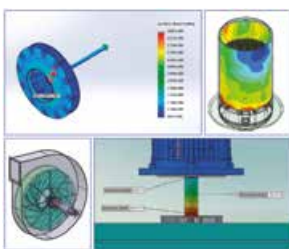
PLANTS AND MAINTENANCE



POWERBOARD



ENGINEERING AND SIMULATIONS



DISTRIBUTION AND CONSULTING



AUTOMOTIVE TESTING



RIMOR SUPPORTS YOU FROM IDEA TO THE FINAL PRODUCT



MAIN INDUSTRIES

- AUTOMOTIVE TESTING
- CHEMICAL & PHARMACEUTICAL
- ENERGY / COMPOST / SYNGAS / BIOMASS
- HIGH TEMPERATURE & FURNACE FANS
- GLASS TREATMENT
- THERMAL TREATMENT
- OIL & GAS
- PRINTING & CONVERTING
- TRIMS SUCTION & SHREDDING

ENGINEERING - PRODUCTION - DISTRIBUTION